



RR2 Series Specification Sheet

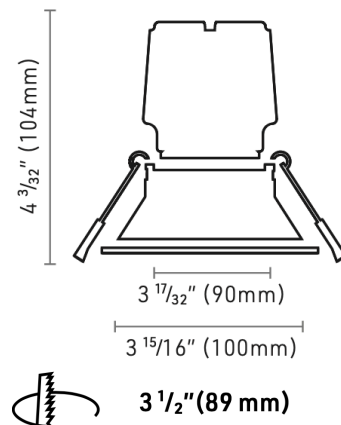
Omega Recessed Downlight

through VISIONZ

Description:

The quality of light for this series is comparable to that of a halogen lamp offering crisp, directional light which perfectly highlights surroundings. It offers a CRI of 90 and glare-control reflector design.

This small LED module provides higher lumen performance than an LED lamp and is very easy to install. Without the need of a housing, it can be installed directly in the ceiling using torsion springs. The LED module is fitted with an external dimmable driver. Omega is also offering style discretion and flexibility with a wide selection of interchangeable trims and accessories.

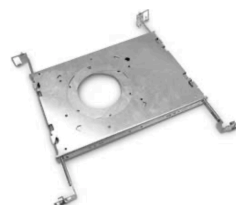
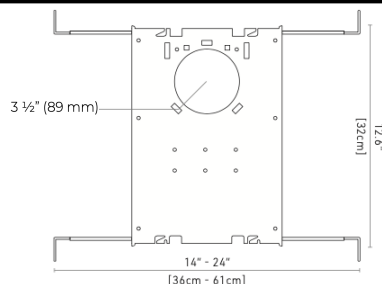


Specification Features:

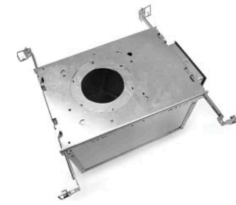
- Anti-glare reflector design UGR ≤ 19
- Reproduces the crisp white light of an MR16 halogen lamp
- 50 000 hours
- High CRI of 90
- Discreet look and sleek design
- Dimmable
- Designed to meet North American woodworking standards.
- 900 lumen (8W) CRI 90+

| TRIM | COLOUR TEMP | BEAM SPREAD | POWER SUPPLY | HOUSING |
|-------------|--|---|--|--|
| RR2 | | | | |
| RR2 - White | 27 - 2700K 30 - 3000K 35 - 3500K 40 - 4000K (Special Order) | 22 - 22 Degrees 36 - 36 Degrees 60 - 60 Degrees | B - ELV dimming 120V D - 0-10V dimming 120/277V | N/C - Retrofit PF - New Construction IC - IC Housing |

Housing:



New Construction



IC Housing

