



KT Series Specifications Sheet

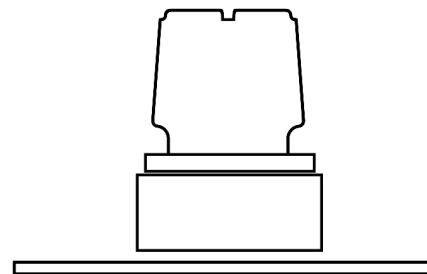
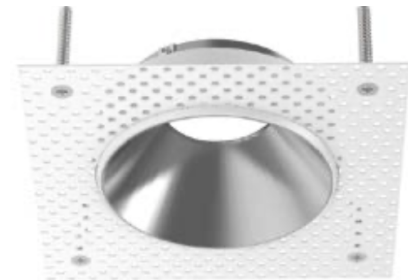
Omega Recessed Downlight

through VISIONZ

Description:

The quality of light for this series is comparable to that of a halogen lamp offering crisp, directional light which perfectly highlights surroundings. It offers a CRI of 90 and glare-control reflector design.

This small LED module provides higher lumen performance than an LED lamp and is very easy to install. Without the need of a housing, it can be installed directly in the ceiling using torsion springs. The LED module is fitted with an external dimmable driver. Omega is also offering style discretion and flexibility with a wide selection of interchangeable trims and accessories.



Specification Features:

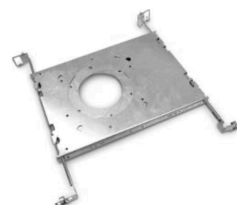
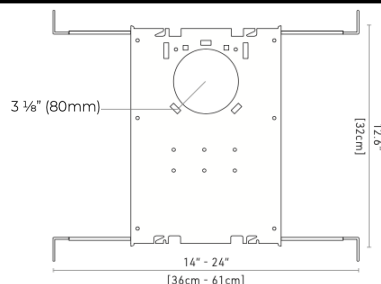
- Anti-glare reflector design $UGR \leq 19$
- Reproduces the crisp white light of an MR16 halogen lamp
- 50 000 hours
- High CRI of 90
- Discreet look and sleek design
- Dimmable
- Designed to meet North American woodworking standards.
- 900 lumen (8W) CRI 90+



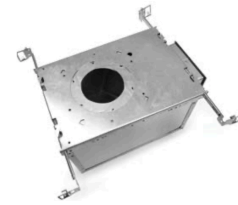
3 1/8" (80 mm)

TRIM	COLOUR TEMP	BEAM SPREAD	POWER SUPPLY	HOUSING
KT0 - Silver	27 - 2700K	22 - 22 Degrees	B - ELV dimming 120V	N/C - Retrofit
KT1 - Black	30 - 3000K	36 - 36 Degrees	D - 0-10V dimming 120/277V	PF - New Construction
KT2 - White	35 - 3500K	60 - 60 Degrees		IC - IC Housing
	40 - 4000K (Special Order)			

Housing:



New Construction



IC Housing